

"D" DIMENSION MUST NOT EXCEED MAXIMUM ADJUSTABLE LEVEL RANGE OF LESLIE LEVEL-MATIC CONTROL PILOT SELECTED.

CONNECTIONS AT "E" MUST BE MADE TO GIVE APPROPRIATE CONTROL ACTION FOR DRAIN VALVE USED I.E. DIRECT OR REVERSE ACTING.

Do not crush Control Pilot connections (E); coils must have continuous downward pitch.

DO NOT LOCATE IN TURBULENT AREA I.E. UNDER DRIP BAFFLE ETC.

1" GLOBE VALVE INSTALL WITH PACKING ON HEATER SIDE

1" GLOBE VALVE INSTALL WITH PACKING ON FILLER CUP SIDE

INSTALL THIS PIPE LEVEL OR WITH MAXIMUM SLOPE SO PT. "C" IS LESS THAN 1 PIPE I.D. BELOW "D".

1" I.P.S. PIPE OF APPROPRIATE SCHEDULE FOR PRESSURE CONDITIONS DO NOT INSULATE MUST HAVE CONTINUOUS SLOPE WHEN NOT IN VERTICAL PLANE.

1" GLOBE VALVE INSTALL WITH PACKING ON FILLER CUP SIDE

1" GLOBE VALVE INSTALL WITH PACKING ON HEATER SIDE

INSTALL THIS PIPE LEVEL OR WITH MAXIMUM SLOPE SO PT. "C" IS LESS THAN 1 PIPE I.D. BELOW "D".

1" I.P.S. PIPE OF APPROPRIATE SCHEDULE FOR PRESSURE CONDITIONS DO NOT INSULATE DO NOT INSTALL ANY VALVES IN THIS LINE MUST HAVE CONTINUOUS SLOPE WHEN NOT IN VERTICAL PLANE.

1" GLOBE VALVE INSTALL WITH PACKING ON HEATER SIDE

1" I.P.S. PIPE CONTINUOUS SLOPE

LESLIE LEVEL-MATIC INSTALLATION VERTICAL FEEDWATER HEATERS

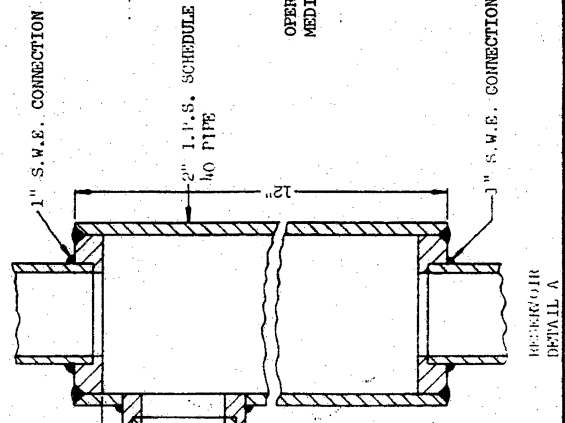
OPERATING MEDIUM AIR CONTROL VALVE

LESLIE LEVEL-MATIC CONTROL PILOT TYPES LA-1, LAU-2, LAP, LAUP, LAB-2, LAUB-2, LAFB & LAUFB

LESLIE LEVEL-MATIC INSTALLATION HORIZONTAL FEEDWATER HEATERS

OPERATING MEDIUM AIR CONTROL VALVE

LESLIE LEVEL-MATIC CONTROL PILOT TYPES LA-1, LAU-2, LAP, LAUP, LAB-2, LAUB-2, LAFB & LAUFB



RESERVOIR DETAIL A



A subsidiary of CHOR International, Inc. 12501 Telecom Drive • Tampa, FL 33637-0906

VERTICAL AND HORIZONTAL FEED WATER HEATER INSTALLATIONS  
DWG. NO. CP-14750F  
DATE 8-21-59